

Figure S51

30 October 2013

8003 nozzles

MOUT South and nearby
road Transect.

Droplet density
(uncorrected) on 1/8-in
spinning rods mounted on
FLB spinners, in droplets per
 mm^2 .

Note value of 33.62 in red
with a **yellow** background
to distinguish the FLB
spinner located on a rooftop.
All other values in red (with
white background) represent
FLB spinners at ground level.

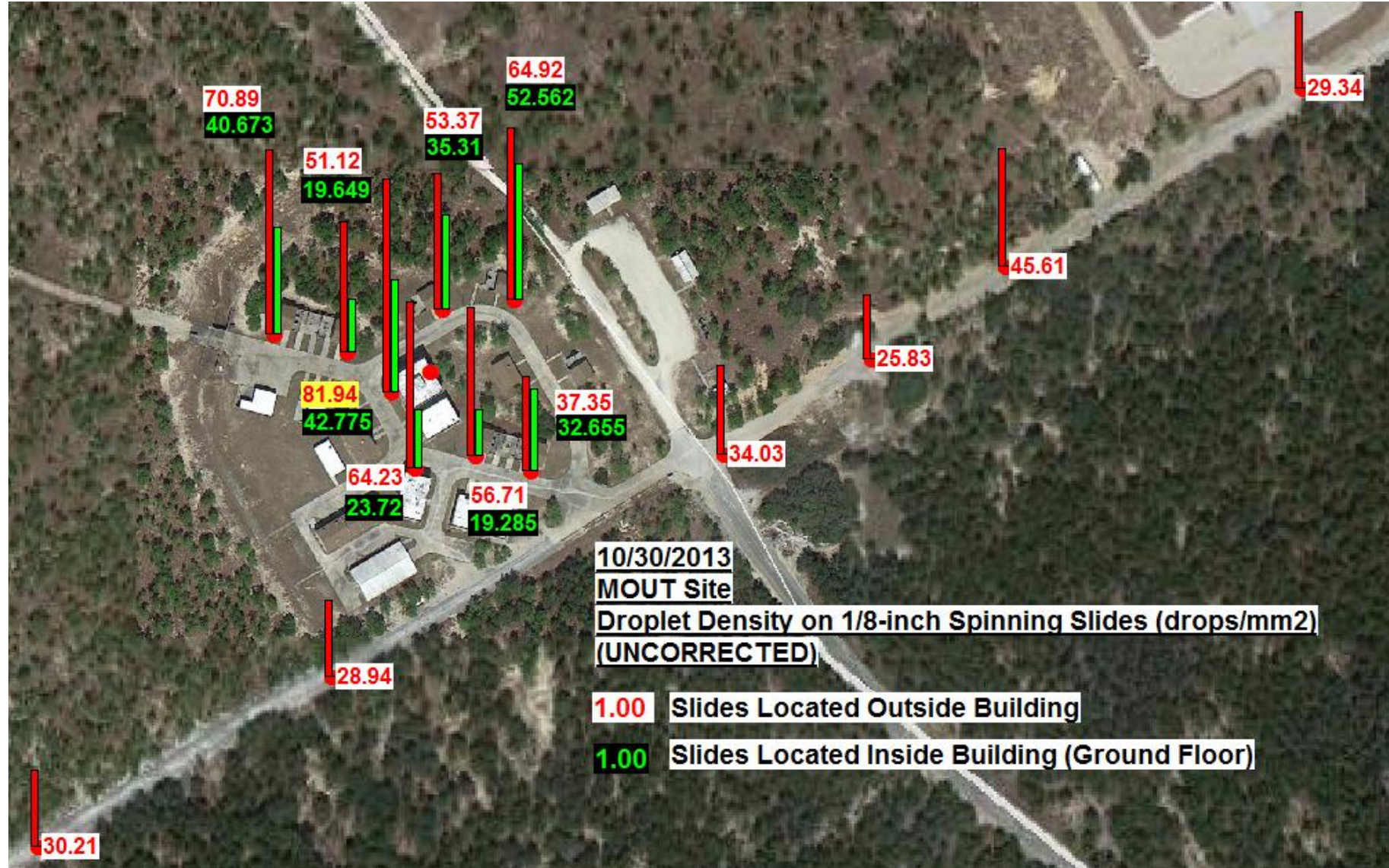


Figure S52

30 October 2013

8003 nozzles

MOUT South and nearby
road Transect.

Droplet density
(uncorrected) on 1/8-in
spinning rods mounted on
outdoor FLB spinners, in
droplets per mm²,
represented as a 'heat map'
to approximate transitions
among values at point
measurement locations.

